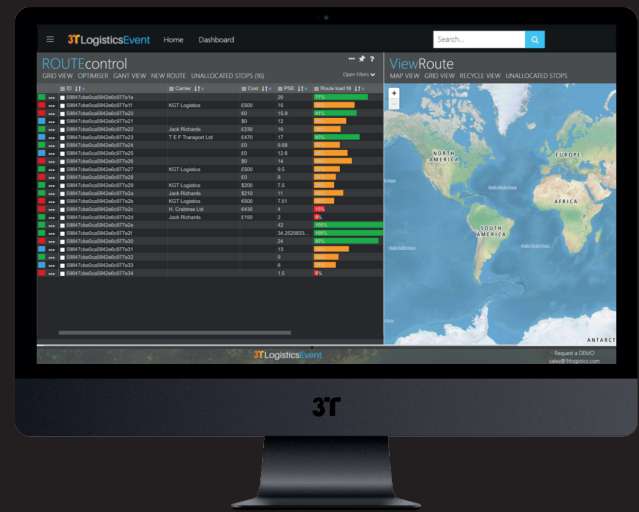


# ROUTE App

## Route scheduling application

A route scheduling application that automates the planning and allocation of carriers.



### Overview of the ROUTE App



Building groupage, automating allocation of orders to carriers, optimising multi drops, printing carrier labels, automatically consolidating orders as they arrive, inbound, outbound, multi mode, parcels and equipment specific. Our ROUTE App functionality is extensive and provides savings rapidly through automation and ensuring the right carrier, right cost and right service are selected every time.

### Some of our clients include:



### Example Customer Problems

"We have to manually book and allocate carriers through their various booking systems or by phone. This takes time and we can't be sure the right price and service is selected every time".

"Our transport planning is done manually and is often time consuming. It also suffers when our best planners are off or one leaves, this affects our business and increases transport costs".

"We use multiple parcel carriers that all require different labels and the use of different booking systems".

### ROUTE Features

- Multi site planning
- Address validation
- Order execution
- Booking in
- Automated planning
- Customs forms
- Delivery plan manifests
- Parcel labelling
- Electronic parcel manifest
- Reverse logistics

### Digital Transport System Solutions

3T's ROUTE App automates the booking and selection of carriers based on your business rules to ensure the right carrier, best price and service type is selected every time without human bias or error.

3T's ROUTE App automates the labour intensive task of planning. It also ensures loads are built to optimal levels through understanding your products dimensions. This means less vehicles used, less cost and decreased CO2 emissions.

3T's ROUTE App is already integrated with all major parcel carriers enabling the automated booking and labelling of all your parcel jobs.

### Typical ROI per £20 million T/O

- Auto allocation of carriers - Circa £60-80k
- Automated planning - Circa £40k
- Increased vehicle utilisation - Circa £50k

### Have any questions about ROUTE?

Request a demonstration (using the link on the right)  
Alternatively call us on: **+44 (0) 116 2824 111**

**Request a demonstration**